

The mobile machine of 2030

FUTURE MOBILE MACHINES ARE MISSION-DRIVEN, ENABLE SEAMLESS OPERATIONS AND DELIVER NEW, UNSEEN VALUE ACROSS THE VALUE CHAIN. SUSTAINABILITY IS BUILT INTO EVERYTHING.

EMBRACING AUTONOMY

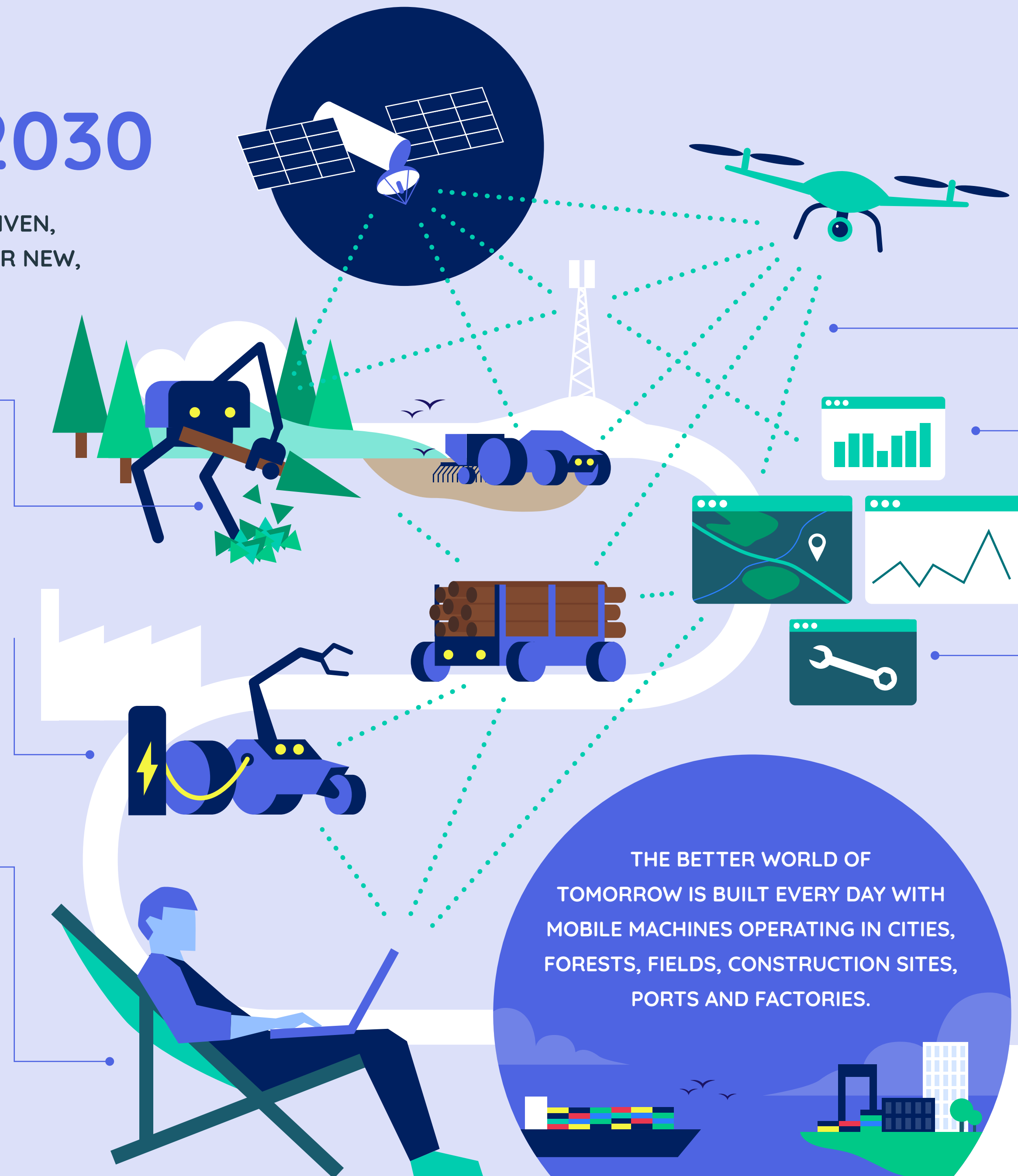
- The level of autonomy ranges from full autonomy to driver assistance systems depending on the application (open/closed environment).
- Autonomy is extended from machine level to mission-driven fleet autonomy.
- Autonomy increases the efficiency of the whole operation process.

ELECTRIFICATION ENABLES ZERO-EMISSION OPERATIONS AND NEW VALUE

- Electrified machines produce no emissions and are efficient, safer and more reliable.
- The fit-for-purpose design offers precise functionalities and improved performance.
- As a result, machines no longer limit their function.

HUMAN IN THE LOOP - BETTER JOBS

- As machines and systems become smarter, people are freed from monotonous work and can focus on more complex tasks that require decision-making skills.
- As a result, work becomes more meaningful and motivating. Employees suffer from less stress and fatigue and their cognitive load decreases.
- A whole new level of safety is achieved. Intelligent, integrated safety systems allow people and machines to work safely in the same area.
- Work is no longer location-specific thanks to remote operations and increased levels of autonomy.



CONNECTED AND COMMUNICATING

- All is connected: Mobile machines operate as efficient, autonomous teams, interacting with each other and exchanging information in real-time in a highly systemic environment.
- All machines are connected to operations management systems and operated with minimal human interference.
- Operations centres have a complete overview of the sites and operational data at all times.
- Ultra-reliable, low-latency connectivity enables high levels of autonomy and maximises the efficiency of operations.

INTELLIGENT CONTROL SYSTEMS AND BETTER DECISION-MAKING

- Decentralised AI enables autonomous decision-making also on a machine-level.
- Information is processed and refined on the machines before it is shared.
- Machines optimize their performance and routines autonomously based on perceived data and information.

LEVERAGING DATA FOR NEW BUSINESS OPPORTUNITIES

- Maintenance needs are predicted and services optimized using data throughout the entire life cycle of the machines.
- Machines are transparent in terms of condition and cost. Open interfaces enable data sharing.
- Each machine has a digital identity for full traceability of lifecycle services, re- and de-manufacturing, recycling and novel value adding services.
- Focus is on results instead of machines and services – that is what customers are paying for.
- Machine-generated data creates new business opportunities and added-value.

THE BETTER WORLD OF TOMORROW IS BUILT EVERY DAY WITH MOBILE MACHINES OPERATING IN CITIES, FORESTS, FIELDS, CONSTRUCTION SITES, PORTS AND FACTORIES.

SIX
Sustainable
Industry X

**MOBILE
WORK
MACHINES**

SIX Mobile Machines is an industry driven cluster of Finnish mobile machine manufacturers and their key technology providers.